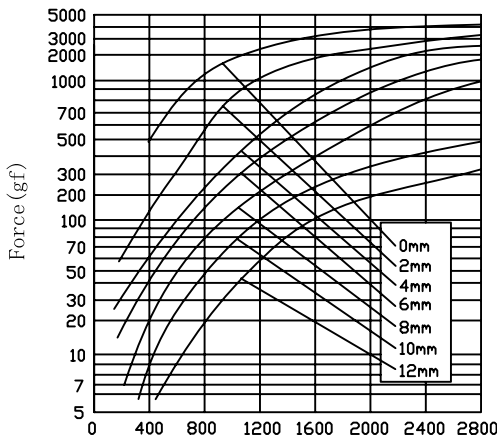


# ZHT-2532L/S Tubular Solenoids



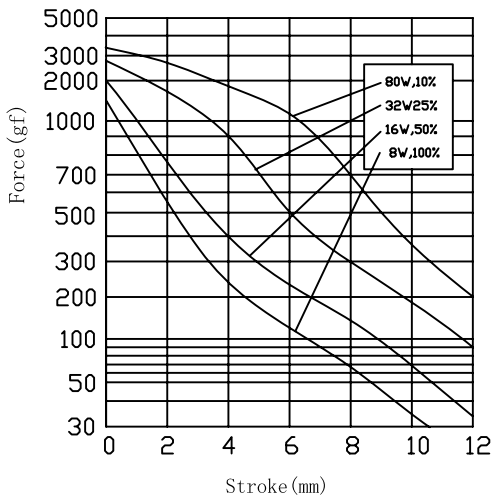
总重量 Total Weight: 42g  
应用范围: 用于纺织机械, 提花机等

AMPERE-TURNS Vs FORCE  
安匝/吸引力

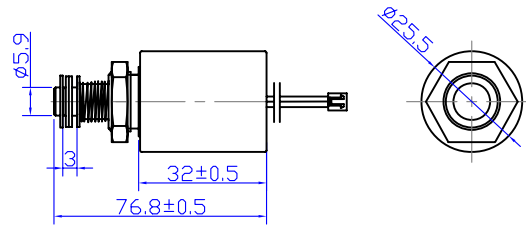


Ampere-turns (AT)

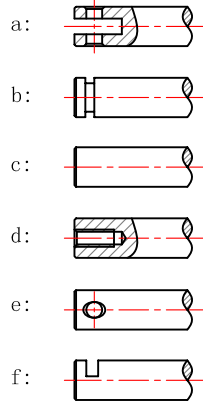
STROKE Vs FORCE  
行程/吸引力



类型: 拉式 TYPE: PULL

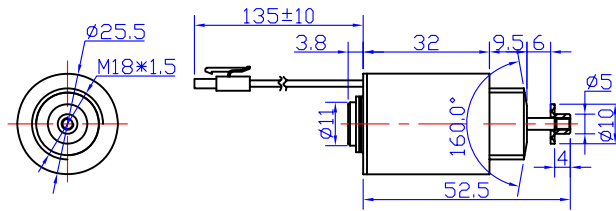


滑杆外部与负载连接的典型结构  
plunger type:

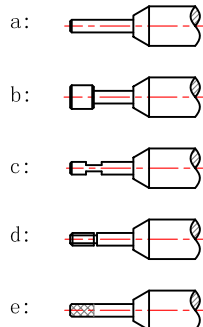


单位:mm Units:mm 通电状态 Shown Energized

类型: 推式 TYPE: PUSH



顶杆外部与负载连接的典型结构  
push shaft type:



单位:mm Units:mm 通电状态 Shown Energized

## COIL DATA线圈资料

Duty cycle (%) = $\frac{\text{"ON" time}}{\text{"ON" time} + \text{"OFF" time}} \times 100\%$ 工作周期 (%) = $\frac{\text{工作时间}}{\text{工作时间} + \text{断开时间}} \times 100\%$		连续 Continuous	间断 Intermittent			
		100%	50%	25%	10%	
MAX. "on" time in seconds 最大工作时间 (秒)		∞	360	32	8	
Watts at 20° 瓦特数 (在20°)		8	16	32	80	
Ampere-turns at 20° 安匝值 (在20°)		666	942	1332	2106	
Type no.	Resistance (20°C) Ω ± 10%	No. Turns	VoltS DC 电压			
型号	阻值 (Ω) ± 10%	线圈匝数				
ZHT-2532L/S	6.5	500	6	8.5	12	19
	26.2	999	12	17	24	38
	104.7	1998	24	34	48	76
	419	3996	48	68	96	152

ZHT