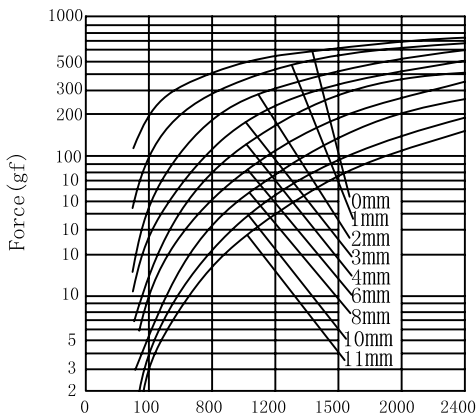


ZHT-1728L/S Tubular Solenoids



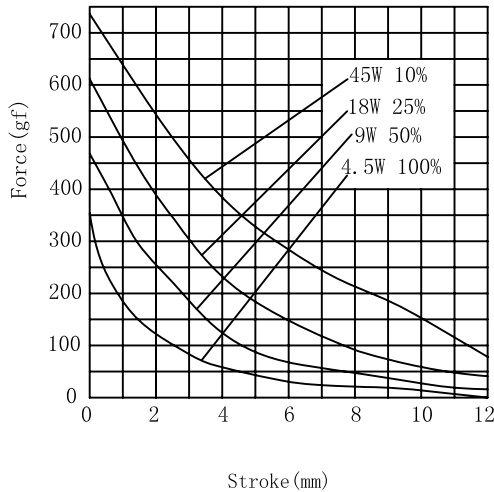
总重量 Total Weight: 46g
应用范围: 用于医疗器械等

AMPERE-TURNS Vs FORCE
安匝/吸引力

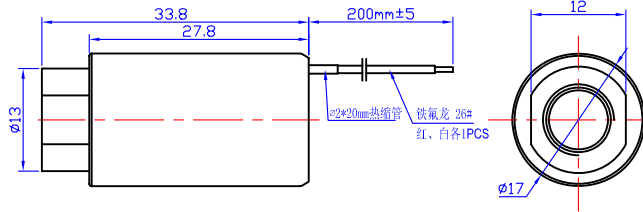


Ampere-turns (AT)

STROKE Vs FORCE
行程/吸引力

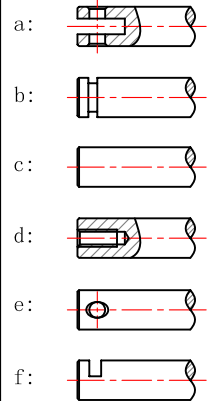


类型: 拉式 TYPE: PULL

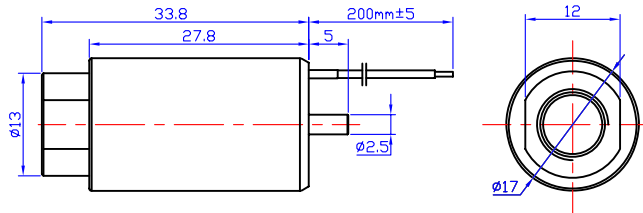


单位:mm Units:mm 通电状态 Shown Energized

滑杆外部与负载连接的典型结构
plunger type:

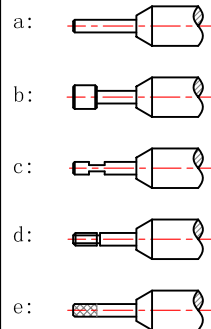


类型: 推式 TYPE: PUSH



单位:mm Units:mm 通电状态 Shown Energized

顶杆外部与负载连接的典型结构
push shaft type:



COIL DATA线圈资料

Duty cycle (%) = $\frac{\text{"ON" time}}{\text{"ON" time} + \text{"OFF" time}} \times 100\%$		连续 Continuous	间断 Intermittent			
工作周期 (%) = $\frac{\text{工作时间}}{\text{工作时间} + \text{断开时间}} \times 100\%$		100%	50%	25%	10%	
MAX. "on" time in seconds 最大工作时间(秒)		∞	50	5	2	
Watts at 20° 瓦特数(在20°)		4.5	9	18	45	
Ampere-turns at 20° 安匝值(在20°)		631	892	1262	1995	
Type no.	Resistance (20°C) Ω ± 10%	No. Turns	VoltS DC 电压			
型号	阻值(Ω) ± 10%	线圈匝数				
ZHT-1728L/S	8	842	6	8.5	12	19
	32	1683	12	17	24	38
	128	3366	24	34	48	76
	512	6731	48	68	96	152

ZHT